



Built Environment
leArning for Climate
AdaptatiON



INTERNATIONAL RESEARCH SYMPOSIUM

Climate Change Adaptation in the Coastal Built Environment

19th - 20th June 2023
Santander (Spain)

Role of the built environment stakeholders in Climate Change Adaptation

Shavindree Nissanka, Chamindi Malalgoda, Dilanthi Amaratunga, Richard Haigh

Global Disaster Resilience Centre, University of Huddersfield, UK

University of
HUDDERSFIELD
Inspiring global professionals



L-Università
ta' Malta



Co-funded by the
Erasmus+ Programme
of the European Union





Built Environment Composition



The context for all human endeavours (bartuska & young, 2007)

A built environment encompasses life's infrastructure that protects and enhances our ethical and societal needs, reflects the quality of human life, and contributes to our vulnerabilities (bosher, carrillo, dainty, glass, & price, 2007)

The physical environment constructed by human activity (forrest & kearns, 2001)



Nexus between built environment and Climate change





Built environment
contributes
significantly to the
climate change
drivers



Costs Tornadoes Cyclones
Droughts Earthquakes Eruptions Aid Emergency
Property Damage Losses Volcanic
Adverse Recover **NATURAL DISASTERS** Insurance Vulnerable
Event Storms Loss of Life Floods Earth
Repair Catastrophes Damage Hurricanes
Weather Geophysical

Built
environment is
highly fragile in
face of disaster
risks induced
by climate
change.

atmosphere
fossil fuel
climate change
temperature
global warming
Earth
sea level
CLIMATE CHANGE
environment
CO2
greenhouse effect
deforestation
planet
extreme weather
emissions
glacier



30 % of the global greenhouse gas emissions attributed to the built environment and its processes



Built environment is made up of manmade structure which often constitute the weakest links and will turn out to be the most dangerous places during disasters.



The Analytical Framework of the Study

	<i>Built environment phases</i>	Planning and Design		Construction		Use and Retrofitting	
	<i>Climate change Adaptation</i>	Physical	Economic	Social	Environmental	Institutional	
Built Environment Stakeholders	Local and national governments	<i>“Role in Climate Change Adaptation in the Built Environment”</i>					
	Private sector						
	Community						
	Civil Organizations and Professional Bodies						
	Academia and research organisations						



National and Local Government

Roles and Responsibilities

National Government

- Providing a long-term visibility and certainty for climate change adaptation.
- Overseeing the Policy and Private Sector intersection
- Promoting investment in low-carbon options
- Fostering innovation in climate change adaptation

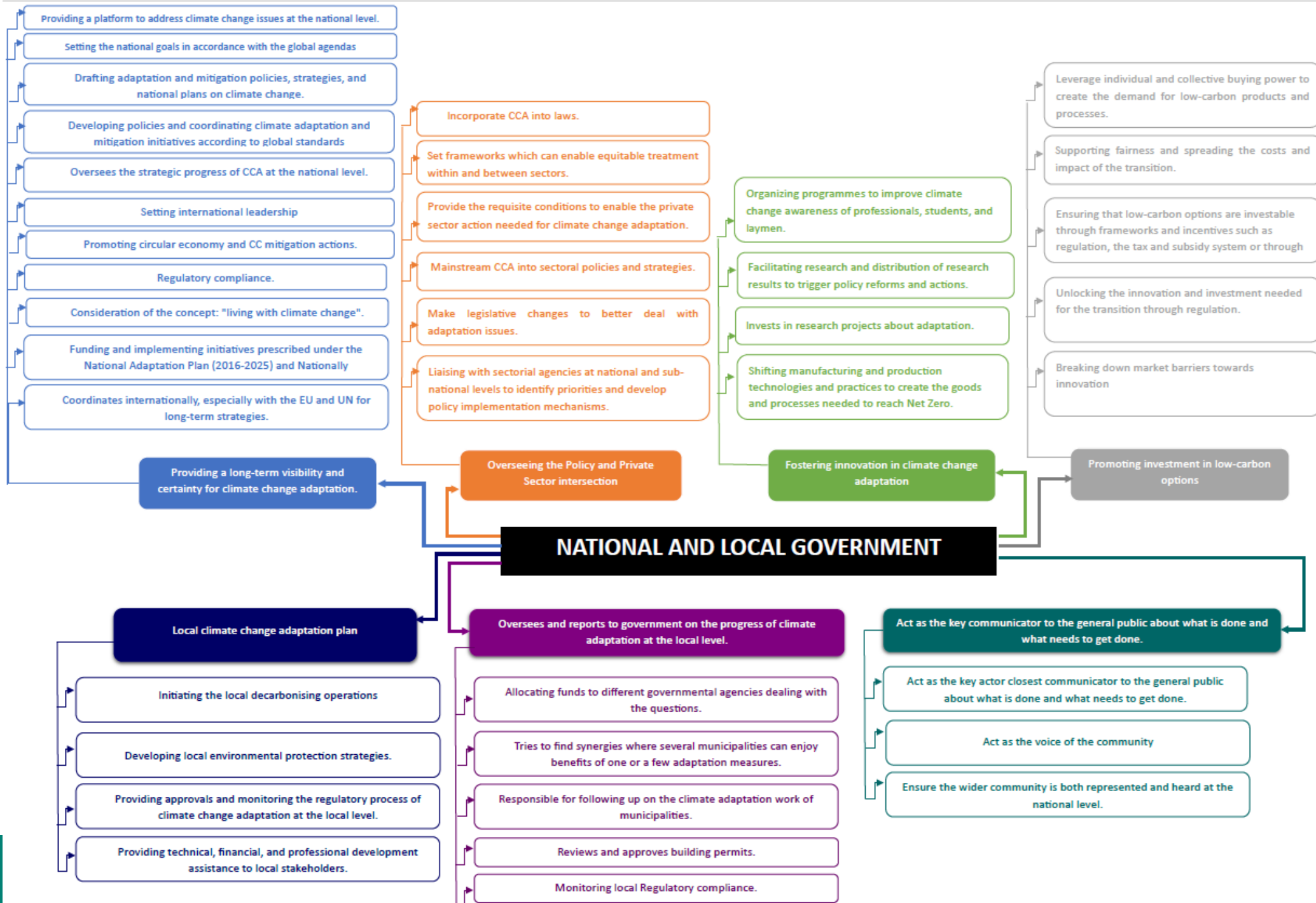




Local Government

- Act as the key communicator to the general public about what is done and what needs to get done.
- Oversees and reports to government on the progress of climate adaptation at the local level
- Leading climate change adaptation plans locally.







PRIVATE SECTOR

University of
HUDDERSFIELD
Inspiring global professionals



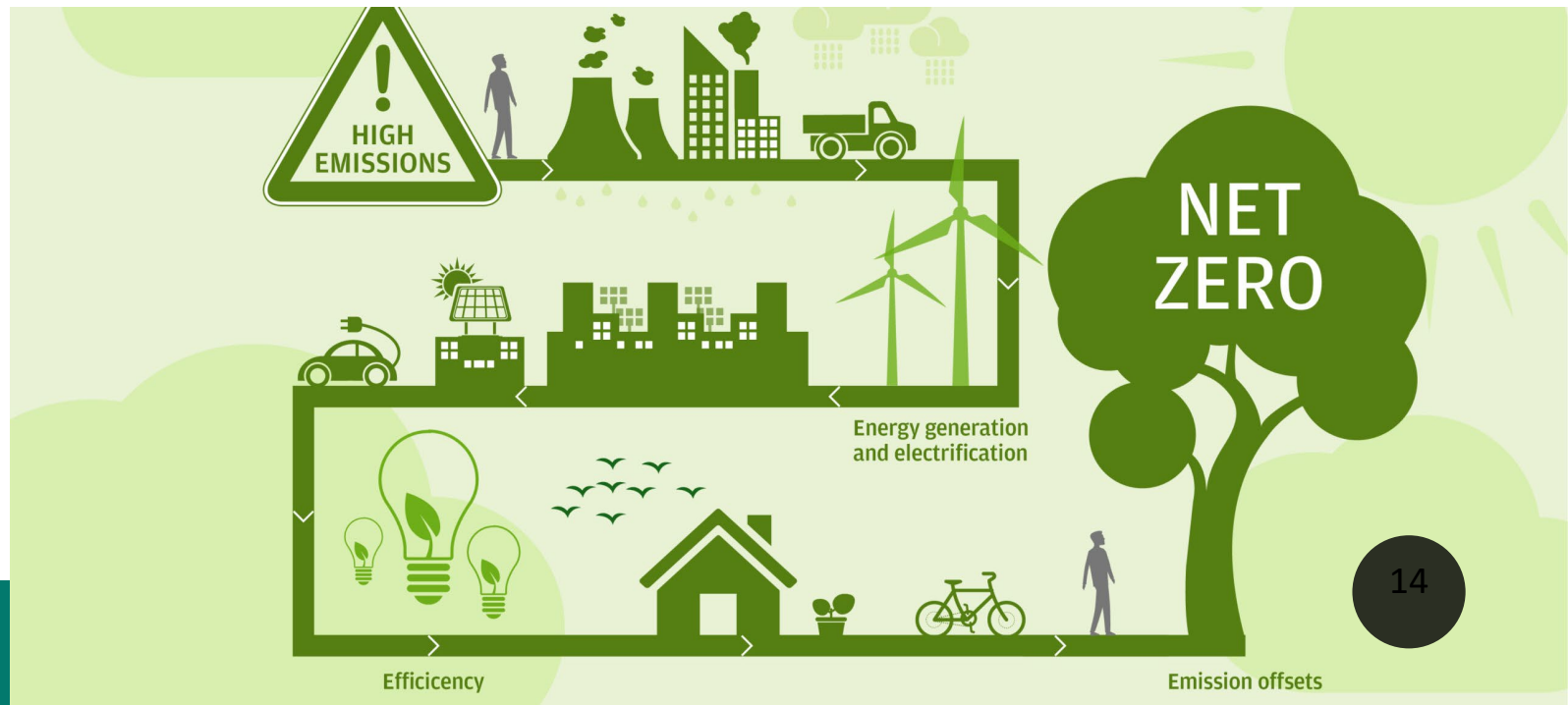
L-Universita'
ta' Malta



Co-funded by the
Erasmus+ Programme
of the European Union

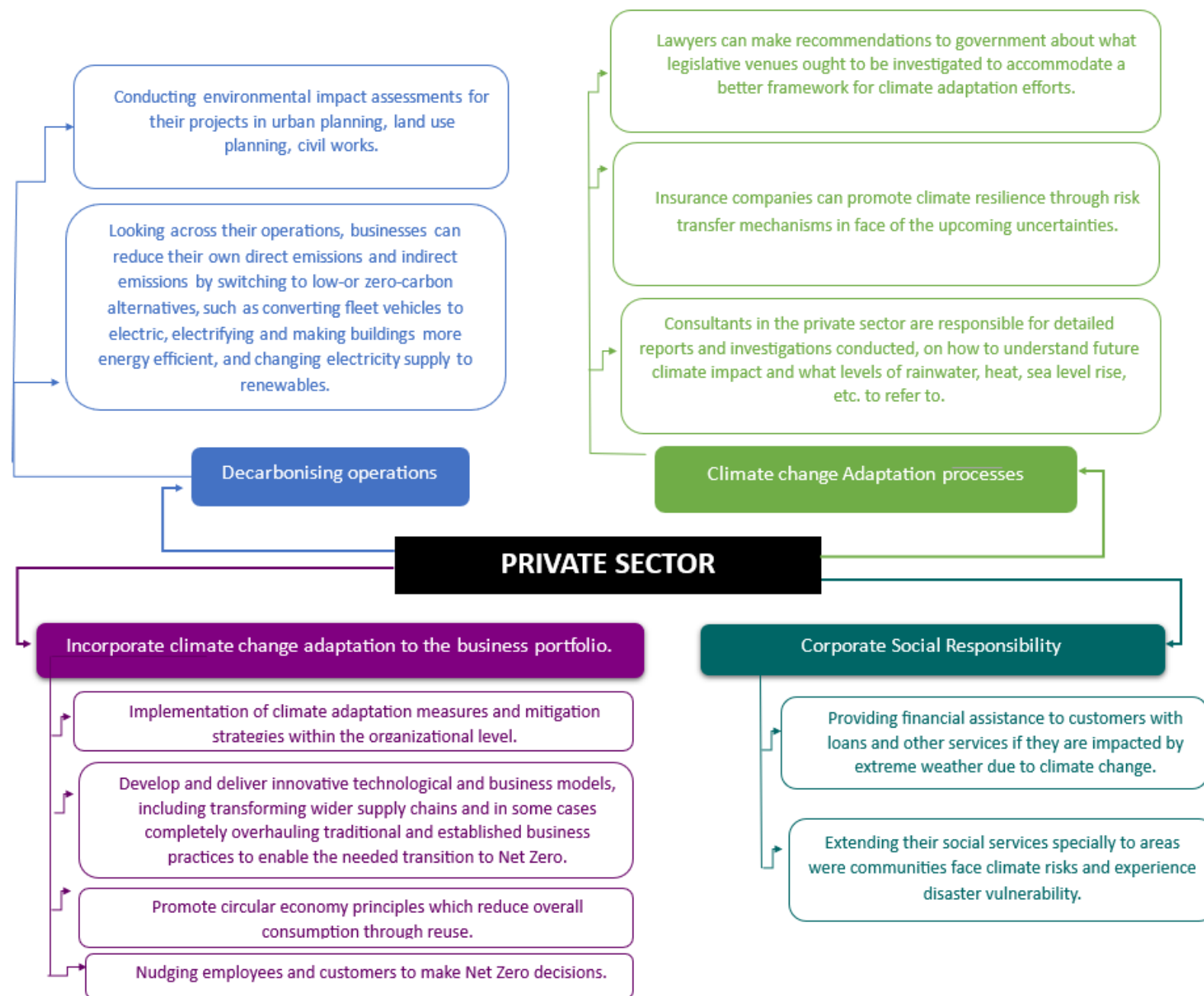
PRIVATE SECTOR

- Decarbonising operations
- Incorporate climate change adaptation to the business portfolio
- Corporate Social Responsibility
- Climate change Adaptation processes



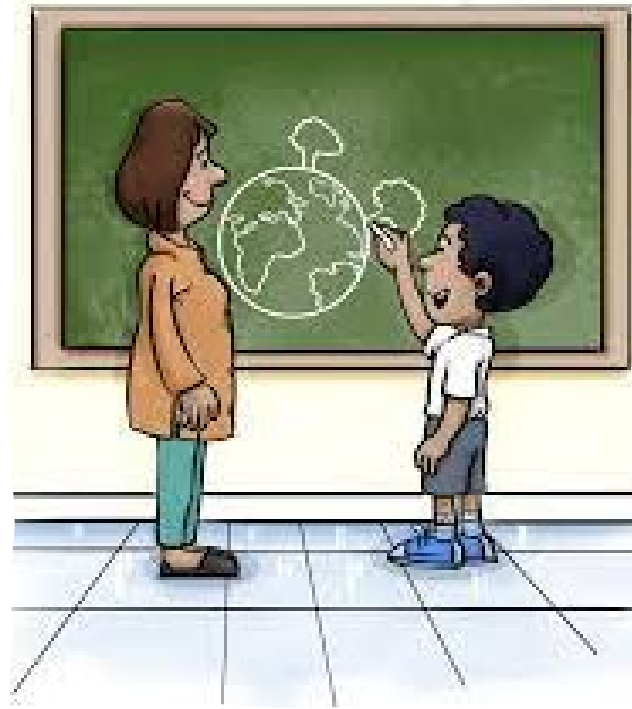


Climate Change Adaptation in the Coastal Built Environment



COMMUNITY

Roles and Responsibilities



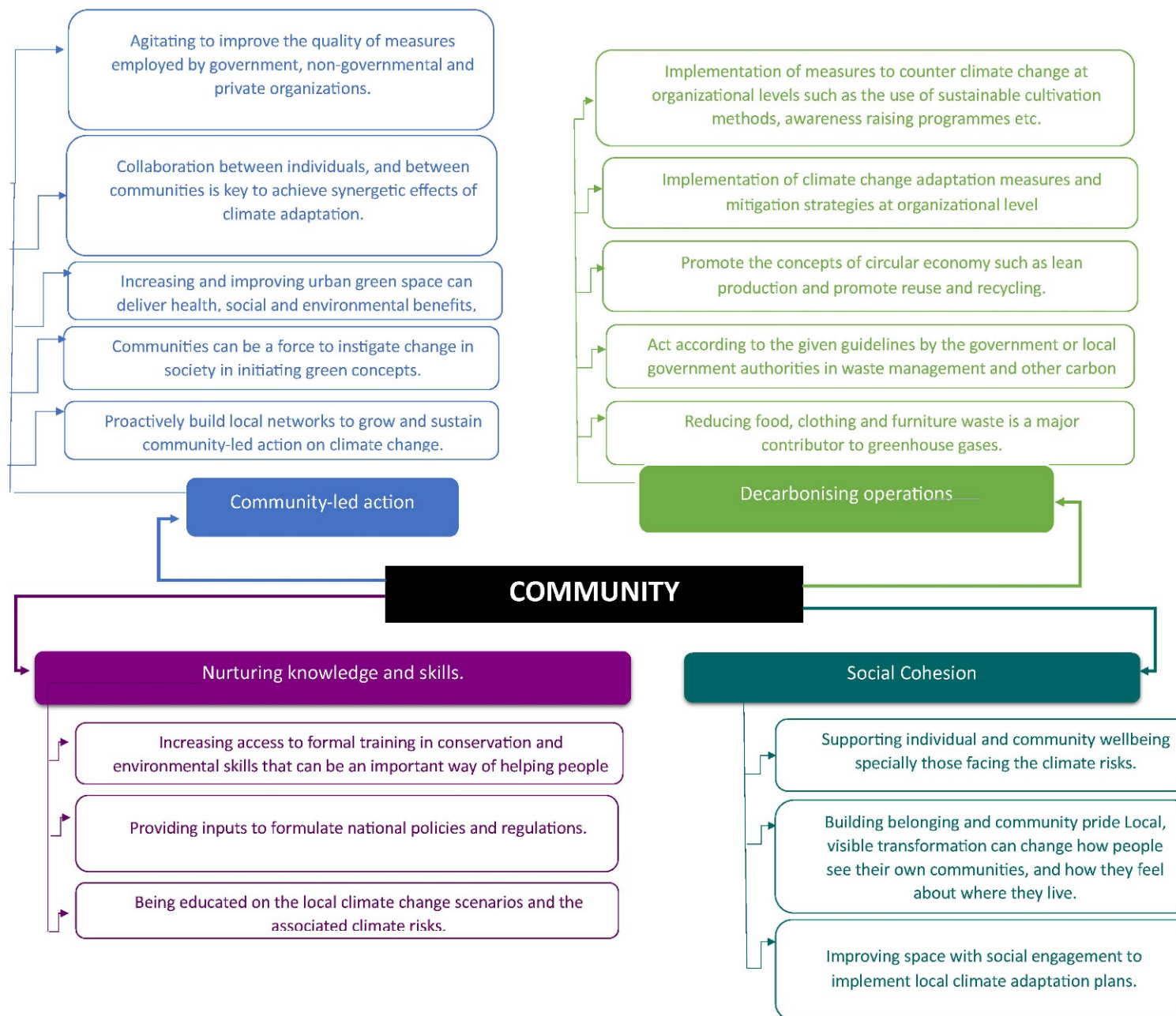
COMMUNITY

- Community-led action
- Decarbonising operations
- Nurturing knowledge and skills.
- Social Cohesion





Climate Change Adaptation in the Coastal Built Environment



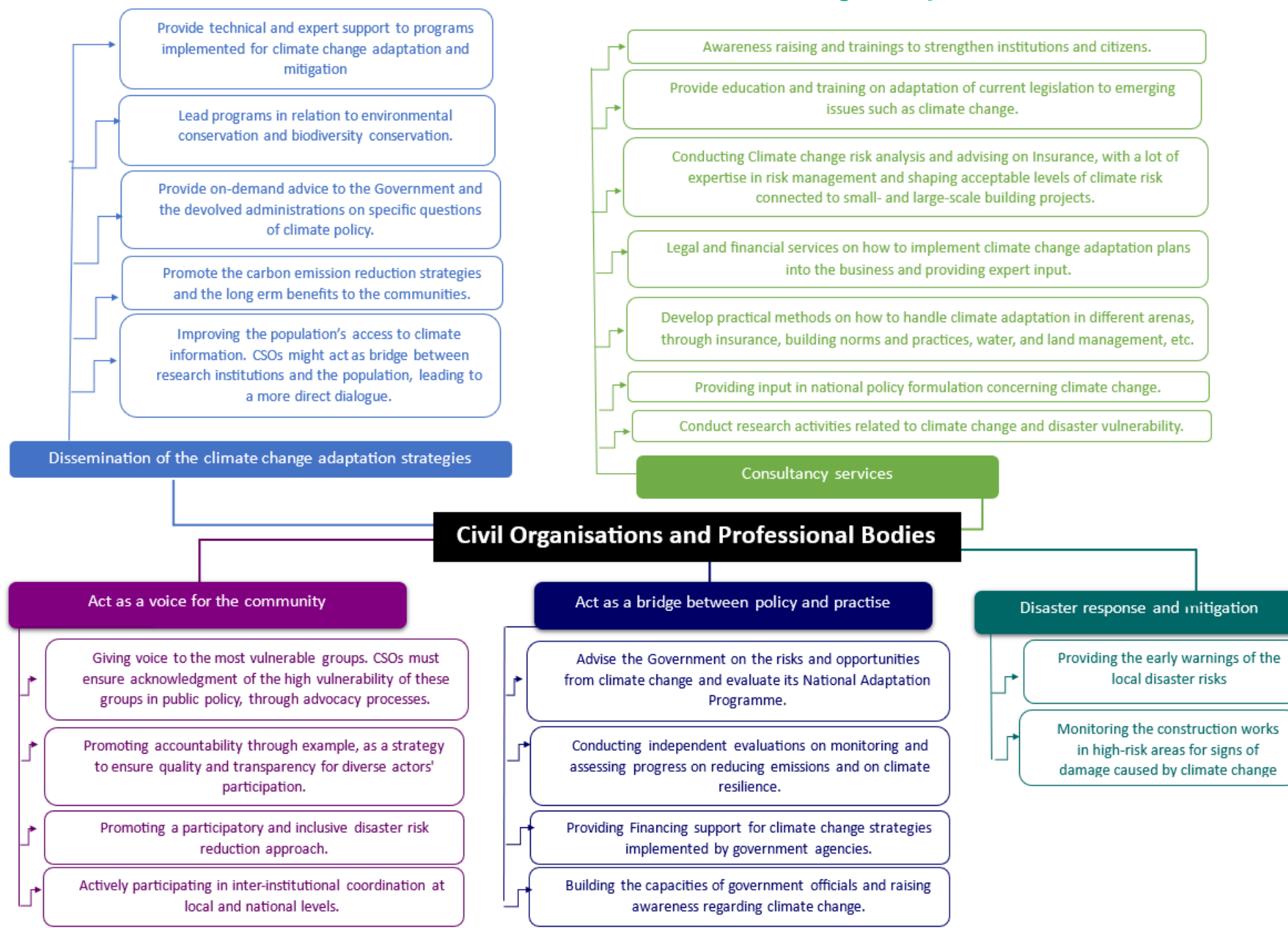
CIVIL ORGANISATIONS AND PROFESSIONAL BODIES

Roles and Responsibilities



CIVIL ORGANISATIONS AND PROFESSIONAL BODIES

- Dissemination of the climate change adaptation strategies
- Act as a voice for the community
- Act as a bridge between policy and practise
- Consultancy services
- Disaster response and mitigation





ACADEMIA AND RESEARCH ORGANISATION

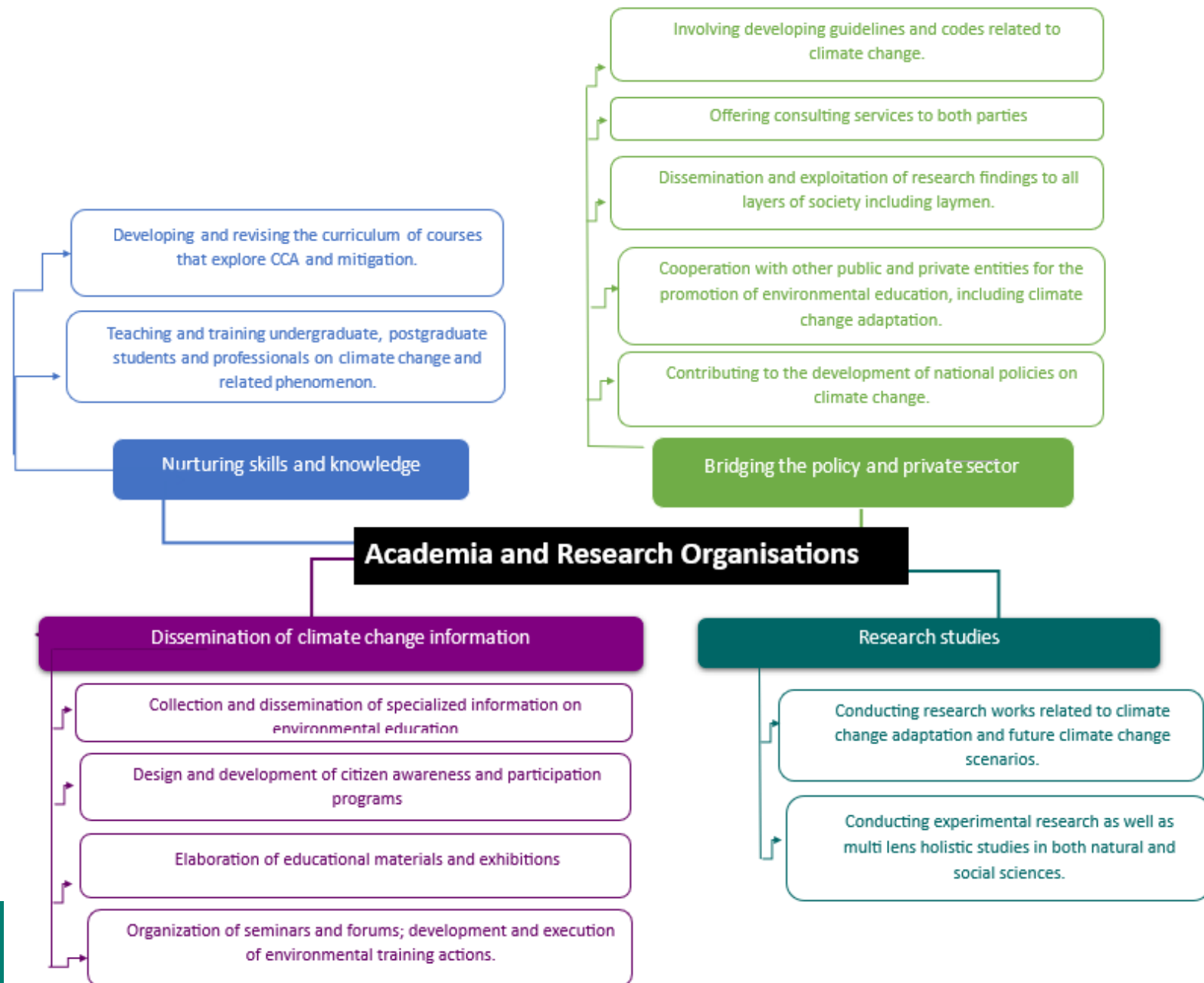
Roles and Responsibilities

ACADEMIA AND RESEARCH ORGANISATION

- Nurturing skills and knowledge
- Bridging the policy and private sector
- Dissemination of climate change information
- Research studies



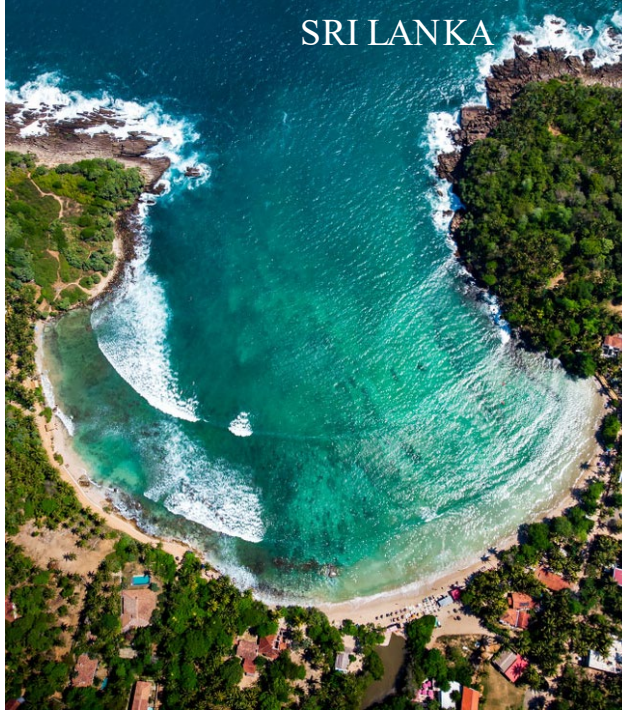
Climate Change Adaptation in the Coastal Built Environment



SWEDEN



SRI LANKA



SPAIN



MALTA



UNITED KINGDOM



Thank you

Co-funded by the
Erasmus+ Programme
of the European Union



The European Commission support for the production of this publication does not constitute an endorsement of the contents which reflects the views only of the authors, and the Commission cannot be held responsible for any use which may be made of the information contained therein.